

# MUMBAI



**THE LEELA**

MUMBAI

## Places of interest

Gateway of India  
Haji Ali shrine  
Elephanta Caves  
Chhatrapati Shivaji Maharaj  
Vastu Sangrahalaya  
Jehangir Art Gallery

*The Leela Mumbai set amidst 11 acres of lush landscaped gardens is 5 minutes from the international airport. It is conveniently located in North Mumbai's commercial centre and export zone.*

## Climate

In summer, the min is 27°C  
and the max is 34°C  
In winter, the min is 19°C  
and the max is 30°C

## General information

Languages: English, Hindi,  
Marathi  
Currency: Indian Rupee  
All major credit cards

# MUMBAI

*SAILAR*

The Leela Mumbai is an elegant hotel offering deluxe accommodation of 394 guestrooms. It is a perfect urban retreat with a beautiful and serene landscaped garden, a cascading waterfall and a dreamy lotus-filled fountain. There are several dining options offering contemporary and specialty cuisine. A relaxing spa and gymnasium provides guests with options to relax.

*[www.theleela.com](http://www.theleela.com)*



The Leela Mumbai

*Welcome to a place where the age old Indian tradition of "Atithi Devo Bhava", meaning "Guest is God", is a way of life. At The Leela, everyone is committed to taking guest service to reverential heights.*

#### *Accommodation*

- Total no. of suites and rooms - 398
- 233 Premier city view
- 75 Premier pool view
- 45 Royal Club
- 22 Executive Suites
- 13 Royal Club Parlour Suites
- 6 Deluxe Suites
- 3 Junior Presidential Suites
- 1 Maharaja Suite

#### *Guestroom Amenities*

- Sony high-definition LED television
- Dual Line internet protocol phone
- Broadband wireless internet
- Electronic safe
- Postropedic mattress
- A gourmet corner with a fine selection of spirits, soft beverages, and snacks
- Tea and coffee maker
- Luxurious bathroom with phone lines
- Pillow Menu
- Power supply: 110/220 volts

#### *Guestroom Services*

- In-room dining
- Laundry and dry cleaning

- Clefs d'Or recognized concierge services
- Wake-up call service
- Doctor on call

#### *The Royal Club*

- Welcome drink on arrival
- Express check-in and check-out
- Exclusive Club Lounge access
- Complimentary food & beverage presentations at the lounge
- Two hours of complimentary meeting room access per stay (Subject to availability)
- Round-the-clock butler service
- Complimentary two-way airport transfers

#### *Dining*

- Le Cirque Signature - Contemporary Franco-Italian restaurant
- Jamavar - Signature Indian restaurant
- Citrus - All-day dining
- The Great Wall - Chinese speciality restaurant
- Six Degrees - The Cosmopolitan bar
- The Lobby Lounge

#### *Conference & Banquet*

##### *Facilities*

- Grand Ballroom-divisible in five parts
- 5 meeting rooms
- 059: Stylish lounge for private celebrations

##### *Spa and Fitness*

- Spa - The Leela
- Steam and sauna
- State-of-the-art fitness studio
- Outdoor swimming pool
- Kids' pool

##### *Special Features*

- The Salon
- Live pianist in evenings
- The Lobby Lounge
- Florist on request
- Sightseeing tours
- Currency exchange
- Mercedes-Benz E-Class on request





Le Cirque Signature

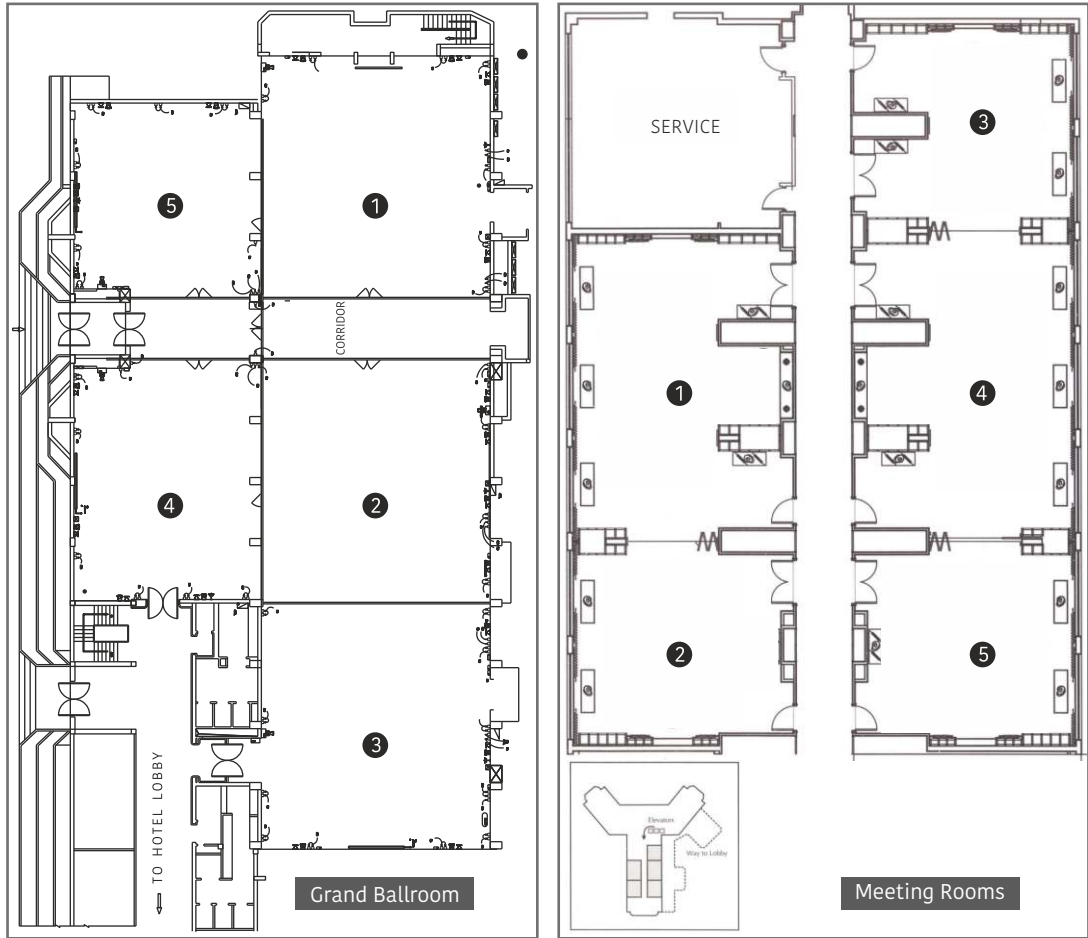


Swimming Pool



Delux Suite Pool View

## BANQUET & MEETING ROOM FLOOR PLAN



- 1 BALLROOM I 2 BALLROOM II 3 BALLROOM III  
4 BALLROOM IV 5 BALLROOM V

- 1 KAMAL 2 MAYA 3 NIDHI  
4 NITHYA 5 DIYA

| VENUE             | AREA<br>SQ. FT. | DIMENSIONS<br>L x W x H | THEATRE<br>STYLE | CLASS<br>ROOM | U-SHAPE | BOARD<br>ROOM | CLUSTER<br>STYLE | RECEPTION |
|-------------------|-----------------|-------------------------|------------------|---------------|---------|---------------|------------------|-----------|
| Lobby Level       |                 |                         |                  |               |         |               |                  |           |
| Grand Ballroom    | 11742           | 161 x 88 x 14.8         | 700              | 236           |         |               | 236              | 1000      |
| Ballroom I        | 2344            | 49 x 48 x 14.8          | 130              | 60            | 40      | 40            | 60               | 150       |
| Ballroom II       | 2444            | 51 x 48 x 14.8          | 130              | 60            | 40      | 40            | 60               | 150       |
| Ballroom III      | 2352            | 49 x 48 x 14.8          | 130              | 60            | 40      | 40            | 60               | 150       |
| Ballroom IV       | 2011            | 51 x 40 x 14            | 50               | 40            | 30      | 30            | 40               | 80        |
| Ballroom V        | 1633            | 41 x 40 x 14            | 40               | 30            | 20      | 25            | 30               | 60        |
| First Floor       |                 |                         |                  |               |         |               |                  |           |
| Diya              | 630             | 22 x 27 x 9             |                  |               |         | 12            |                  |           |
| Nidhi             | 630             | 22 x 27 x 9             |                  |               |         | 12            |                  |           |
| Maya              | 630             | 22 x 27 x 9             |                  |               |         | 12            |                  |           |
| Kamal             | 920             | 34 x 27 x 9             |                  |               |         | 16            |                  |           |
| Nithya            | 920             | 34 x 27 x 9             | 30               |               |         | 16            | 20               |           |
| Lower Lobby Level |                 |                         |                  |               |         |               |                  |           |
| 059               | 1940            | 18 x 10 x 2             | 60               | 30            | 30      | 25            | 48               | 80        |



#### TRANSPORTATION

International Airport, 1.5 km  
Domestic Airport, 7 km  
BKC, 11.1 km  
Bombay Exhibition Centre, 7.3 km

#### The Leela Mumbai

Sahar, Mumbai 400 059 India  
Tel: + 91 22 6691 1234  
Fax: + 91 22 6691 1212  
E mail : [reservations@theleela.com](mailto:reservations@theleela.com)

#### RESERVATIONS & INFORMATION

THE LEELA PALACES, HOTELS AND RESORTS

GDS CHAIN CODE: LR

THE LEELA RESERVATIONS

WORLDWIDE TOLL FREE

|  |                   |
|--|-------------------|
| INDIA  | 1-800-1031-444    |
| USA  | 855 670 3444      |
| UK   | 08000 261 111     |
| HONG KONG  | 800 906 444       |
| SINGAPORE  | 1800 223 4444     |
| PRIVATE LINES  | + 91 124 4425 444 |
| <a href="http://www.theleela.com">www.theleela.com</a> |                   |

#### PREFERRED HOTELS AND RESORTS WORLDWIDE

TOLL NUMBER 1 817 567 9633

##### Asia & Pacific

Australia, China, Hong Kong, India, Japan, Singapore, New Zealand, Taiwan, Thailand

##### Central & South America

Argentina, Brazil, Chile, Colombia

##### Europe

Austria, Belgium, France, Germany, Ireland, Italy, Netherlands, Norway, Russia, Spain, Sweden, Switzerland, UK

##### Middle East & Africa

Israel, South Africa, UAE

##### North America

Canada, USA, Mexico

[www.preferredhotels.com](http://www.preferredhotels.com)



## THE LEELA MUMBAI

The Leela Palaces, Hotels and Resorts: Bengaluru, Chennai, Jaipur, New Delhi, Udaipur, Bhartiya City Bengaluru, Delhi, Gandhinagar, Gurugram, Mumbai, Ashtamudi and Kovalam | Opening shortly: Hyderabad.