

# BENGALURU



**THE LEELA PALACE**

BENGALURU

## Places of interest

Bannerghatta national park  
Nandi hills  
Bengaluru Palace  
Srirangapatnam  
Bull temple  
St. Mary's Basilica

*Drawing inspiration from the  
architectural style of the  
Royal Palace of Mysore,  
The Leela Palace Bengaluru  
stands majestically amidst  
seven acres of lush gardens  
and a sparkling lagoon in the  
garden city of Bengaluru.*

## Climate

In summer, the min is 27°C  
and the max is 33°C  
In winter, the min is 15°C  
and the max is 24°C

## General information

Languages: English, Hindi,  
Kannada, Tamil  
Currency: Indian Rupee  
All major credit cards

*ILAL AIRPORT ROAD*

# BENGALURU

The Leela Palace Bengaluru has 357 luxurious guestrooms and suites multiple dining options and extensive banqueting and conferencing venues.

World-class shopping comes to you in the form of The Leela Galleria. A luxuriously designed spa and a state-of-the-art fitness centre make the hotel an ideal place to stay for the business traveler.

*[www.theleela.com](http://www.theleela.com)*



The Leela Palace Bengaluru

*Welcome to a place where the age old Indian tradition of “Atithi Devo Bhava”, meaning “Guest is God”, is a way of life. At The Leela, everyone is committed to taking guest service to reverential heights. “Welcome to a world of grandeur & luxury”*

#### *Accommodation*

- Total no. of suites and rooms - 357
- 152 Deluxe rooms
- 20 Conservatory rooms
- 80 Royal Premier rooms
- 76 Royal Club rooms
- 8 Executive suites
- 5 Royal Club suites
- 5 Tower suites
- 8 Turret suites
- 2 Royal suites
- 1 Maharaja suite

#### *Guestroom Amenities*

- Sony High Definition LCD television with a DVD player
- Dual Line internet protocol phone
- Broadband wireless high speed internet
- Data port jacks
- Electronic safe
- Ergonomic Mattress and Pillow Menu
- A Gourmet corner with fine selection of spirits, soft beverages and snacks
- Tea and coffee maker
- Four Fixture Bathroom with Spa mood lighting and phone lines
- Power supply: 110/220 volts

#### *Guestroom Services*

- In-room dining
- Laundry and dry cleaning
- Concierge services
- Wake-up call service
- Doctor on call

#### *The Royal Club*

- Welcome drink on arrival
- Express check-in/check-out
- Exclusive Club Lounge
- Complimentary food & beverage presentations at the lounge
- Boardroom and meeting rooms with comprehensive facilities
- Cigar Lounge
- Billiards room
- Round the clock butler service

#### *Dining*

- Jamavar - Signature Indian restaurant
- Le Cirque Signature - An exclusive experience serving French and Italian signatures from the flagship Le Cirque New York
- Zen - Pan-Asian cuisine
- Citrus - all-day dining
- Library Bar - International martinis and cigar lounge

#### *Conference & Banquet*

##### *Facilities*

- Grand Ballroom with a pre-function area
- Royal Ballroom with a pre-function area
- 12 board and meeting rooms

##### *Spa and Fitness*

- Asia's premier urban spa
- Outdoor swimming pool

##### *Special Features*

- A beauty salon
- A shopping arcade
- Live instrumental music at The Lobby
- Florist on request
- Sightseeing tours
- Currency exchange





Le Cirque Signature

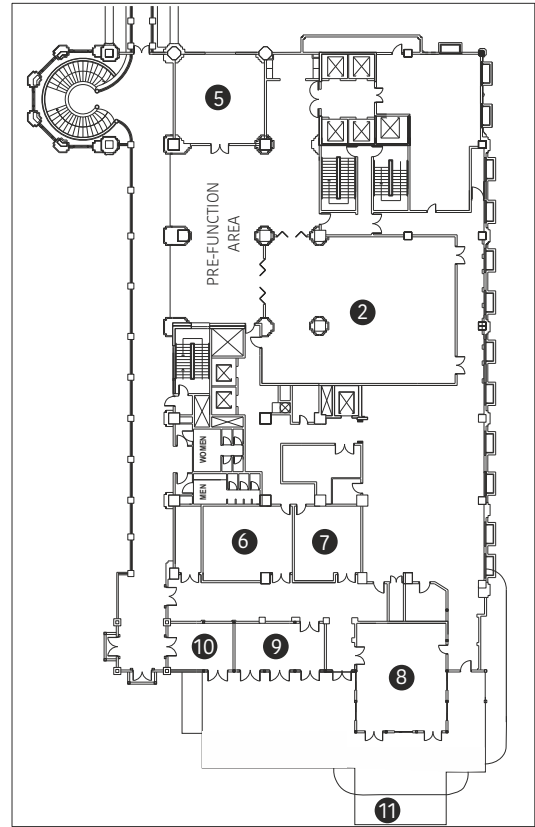
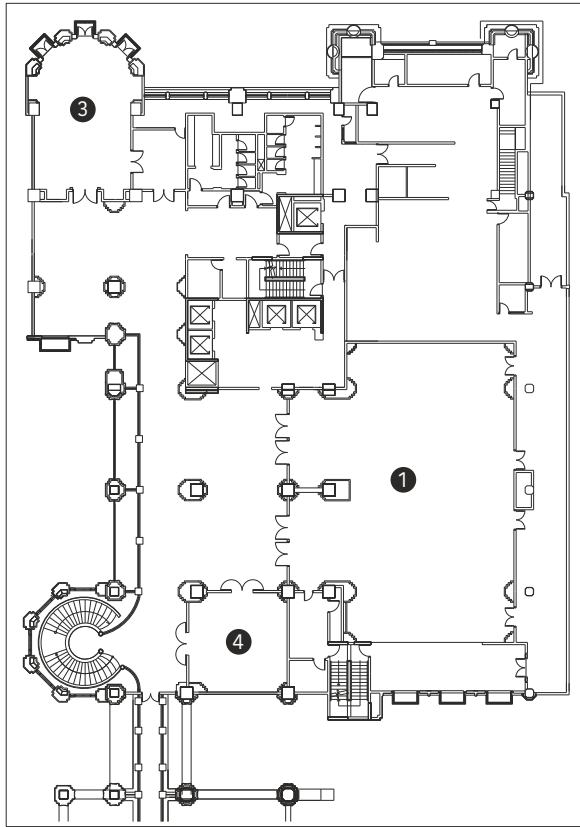


The Spa Relaxation room



Deluxe Room

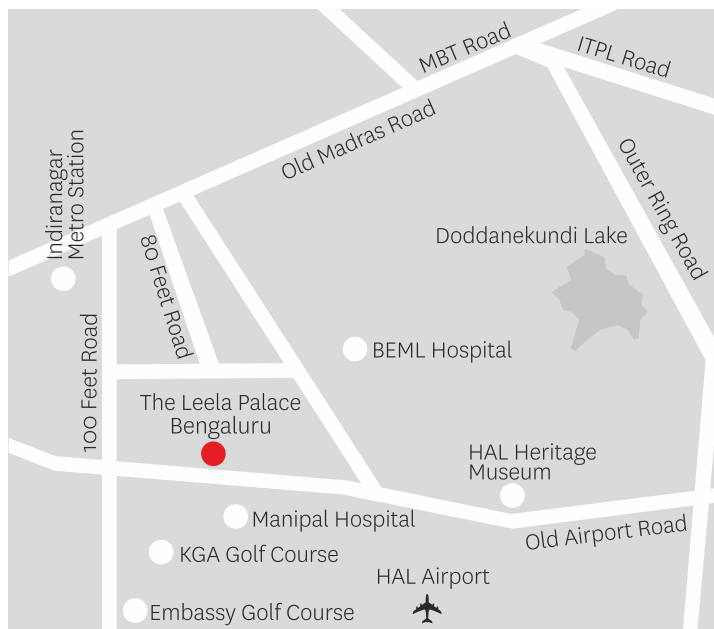
## BANQUET & MEETING ROOM FLOOR PLAN



- 1** GRAND BALLROOM   **2** ROYAL BALLROOM   **3** TURRET BOARDROOM   **4** SITARA   **5** KAMAL  
**6** NIDHI   **7** YATRA   **8** DIYA   **9** SURYA   **10** MAYA   **11** EXTENDED TERRACE

VENUE	AREA SQ. FT.	DIMENSIONS L x W x H	SIT/DOWN BUFFET	THEATRE STYLE	CLASS ROOM	BOARD ROOM	CLUSTER ROOM	U-SHAPE	RECEPTION
Grand Ballroom	4400	100 x 44 x 15	240	600	240	80	200	80	900-1000
Grand Ballroom - PFA	2429	53 x 15 x 10							
Turret Boardroom	768	24 x 32 x 10							
Royal Ballroom	2700	60 x 45 x 13	120	200	90	40	96	35	250-300
Royal Ballroom - PFA	1568	56 x 58 x 11							
Kamal	784	28 x 28 x 10	40	60	27	20	30	20	
Sitara	756	28 x 27 x 10	40	60	27	20	30	20	50
Nidhi	644	28 x 23 x 10	30	45	24	20	30	17	50
Yatra	460	20 x 23 x 10	20	30	18	15	20	11	
Diya	891	33 x 27 x 9	40	80	36	23	40	26	
Diya Terrace	1652	35 x 28							110
Surya	392	28 x 14 x 8	15	20	9	15	10	15	
Surya Terrace	1520	40 x 38							
Maya	280	20 x 14 x 8	10	15	9	9	10	9	
Roshni	406	29 x 14 x 8				12			
Dhwani	377	29 x 13 x 8				12			
Nithya	840	30 x 28 x 8	35	70	20	20	24	18	
Royal Club Boardroom	700	28 x 25 x 14				20			

PFA: Pre - Function Area



#### TRANSPORTATION

International Airport, 45 km  
Domestic Airport, 45 km

#### The Leela Palace Bengaluru

23, HAL Airport Road,  
Bengaluru 560 008 India  
tel: + 91 80 2521 1234  
fax: + 91 80 2521 2222  
e mail: [reservations@theleela.com](mailto:reservations@theleela.com)

#### RESERVATIONS & INFORMATION

THE LEELA PALACES, HOTELS AND RESORTS

GDS CHAIN CODE: LR

THE LEELA RESERVATIONS

WORLDWIDE TOLL FREE

INDIA	1-800-1031-444
USA	855 670 3444
UK	08000 261 111
HONG KONG	800 906 444
SINGAPORE	1800 223 4444
PRIVATE LINES	+ 91 124 4425 444
<a href="http://www.theleela.com">www.theleela.com</a>	

#### PREFERRED HOTELS AND RESORTS WORLDWIDE

TOLL NUMBER 1 817 567 9633

##### Asia & Pacific

Australia, China, Hong Kong, India, Japan, Singapore, New Zealand, Taiwan, Thailand

##### Central & South America

Argentina, Brazil, Chile, Colombia

##### Europe

Austria, Belgium, France, Germany, Ireland, Italy, Netherlands, Norway, Russia, Spain, Sweden, Switzerland, UK

##### Middle East & Africa

Israel, South Africa, UAE

##### North America

Canada, USA, Mexico

[www.preferredhotels.com](http://www.preferredhotels.com)



## THE LEELA PALACE

BENGALURU

The Leela Palaces, Hotels and Resorts: Bengaluru, Bhartiya City Bengaluru, Chennai, Delhi / New Delhi, Gandhinagar, Goa, Gurugram, Jaipur, Mumbai, Udaipur.

Opening Shortly: Hyderabad | Future Developments: Agra.