

# KOVALAM • KERALA



**THE LEELA**

KOVALAM

A RAVIZ HOTEL

## Places of interest

Sri Padmanabhaswamy Temple  
15 Kms  
The Golf Club 18 Kms  
Museum and Art Gallery 18 Kms  
Poovar Backwaters 20 Kms  
Elephant Camp 45 Kms  
Lion Safari and Crocodile Park  
45 Kms  
Ashtamudi Lake (Houseboat Cruise)  
80 Kms  
Kanyakumari 85 Kms  
Kerala Arts & Crafts Village  
3.3 Kms

*The Leela Kovalam,  
A Raviz Hotel, built on a  
cliff-top and spread over acres of  
lush greenery, is cradled between  
wide sweeping beaches and has a  
panoramic view of the famous  
Kovalam coastline.*

## Climate

In summer, the min is 30°C  
and the max is 40°C  
In winter, the min is 23°C  
and the max is 32°C

## General information

Languages: English, Malayalam,  
Tamil, Hindi  
Currency: Indian Rupee  
All major credit cards

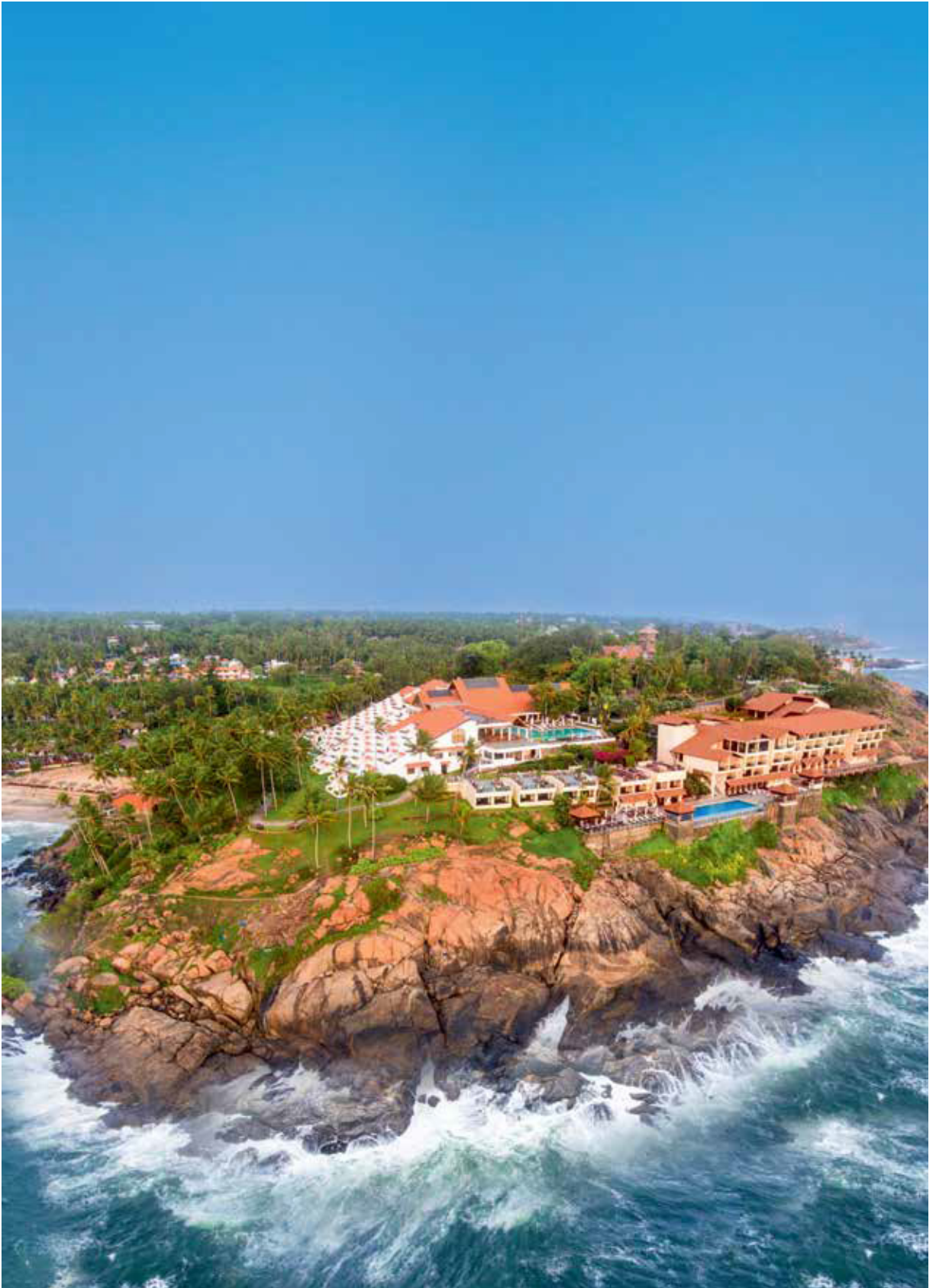
*KERALA*

# KOVALAM

This luxury resort, with an array of superlative restaurants and lounges, also specializes in traditional Ayurvedic treatments. Two stunning infinity pools overlook the Arabian Sea.

The Club has an exclusive infinity pool, Library Lounge and Living Room and is perched on a cliff overlooking the sea.

*[www.theleela.com](http://www.theleela.com)*



The Leela Kovalam, A Raviz Hotel

*Welcome to a place where the age old Indian tradition of “Atithi Devo Bhava”, meaning “Guest is God”, is a way of life. At The Leela, everyone is committed to taking guest service to reverential heights.*

### ***Accommodation***

Total no. of suites and rooms - 188

- 19 Garden View Villa
- 22 Sea View Villa
- 84 Premier Sea View Rooms
- 49 Royal Club Rooms
- 6 Royal Club Suites
- 1 Royal Club Duplex Suite
- 1 Ocean View Suite
- 2 Presidential Suites
- 4 Kovalam Palace Suites

### ***Guestroom Amenities***

- High definition LED television
- High speed internet connectivity
- Electronic safe
- A gourmet corner with fine selection of spirits, soft beverages and snacks
- Tea and coffee maker
- Luxurious bathroom with a walk-in shower
- Power supply: 110 / 220 volts

### ***Guestroom Services***

- In-room dining
- Laundry and dry cleaning
- Concierge service
- Wake-up call service
- Doctor / Nurse on call

### ***The Club***

- Cliff-top location
- Sea view wing with entry for Club residents only
- Club lobby with private check-in and check-out
- The Café with alfresco dining
- The Living Room
- The Library
- Sundeck Lounge
- The Club pool
- Personalised butler service on call
- Exclusive usage of Club gym

### ***Dining***

- The Terrace - All-day dining
- The Tides - Pan Asian Seafood Speciality restaurant
- The Café (Exclusively for Club residents)
- Jazz and Blues Bar
- The Sky Bar - with a stunning view of the Kovalam coastline
- The Bistro

### ***Conference & Banquet***

#### ***Facilities***

- Raviz Convention Centre
- 3 Boardrooms
- Beachside events
- Pandhal - A traditional Kerala style non air- conditioned hall
- Ananthapuri Ballroom - A state of the art partitionable convention centre

- Maya banquet hall
- The Hub
- Stone Park and Chess Park

### ***Spa and Fitness***

- Ayurveda and wellness spa
- State-of-the-art fitness studio
- Three swimming pools (one exclusively for Club residents)
- Yoga and meditation centre with daily sessions for guests
- Archery
- Tennis
- Badminton
- Table tennis
- Billiards

### ***Special Features***

- Sightseeing tours and day picnics
- Children's play room
- Currency exchange
- Aaramam, in-house organic garden





Infinity Pool at The Club

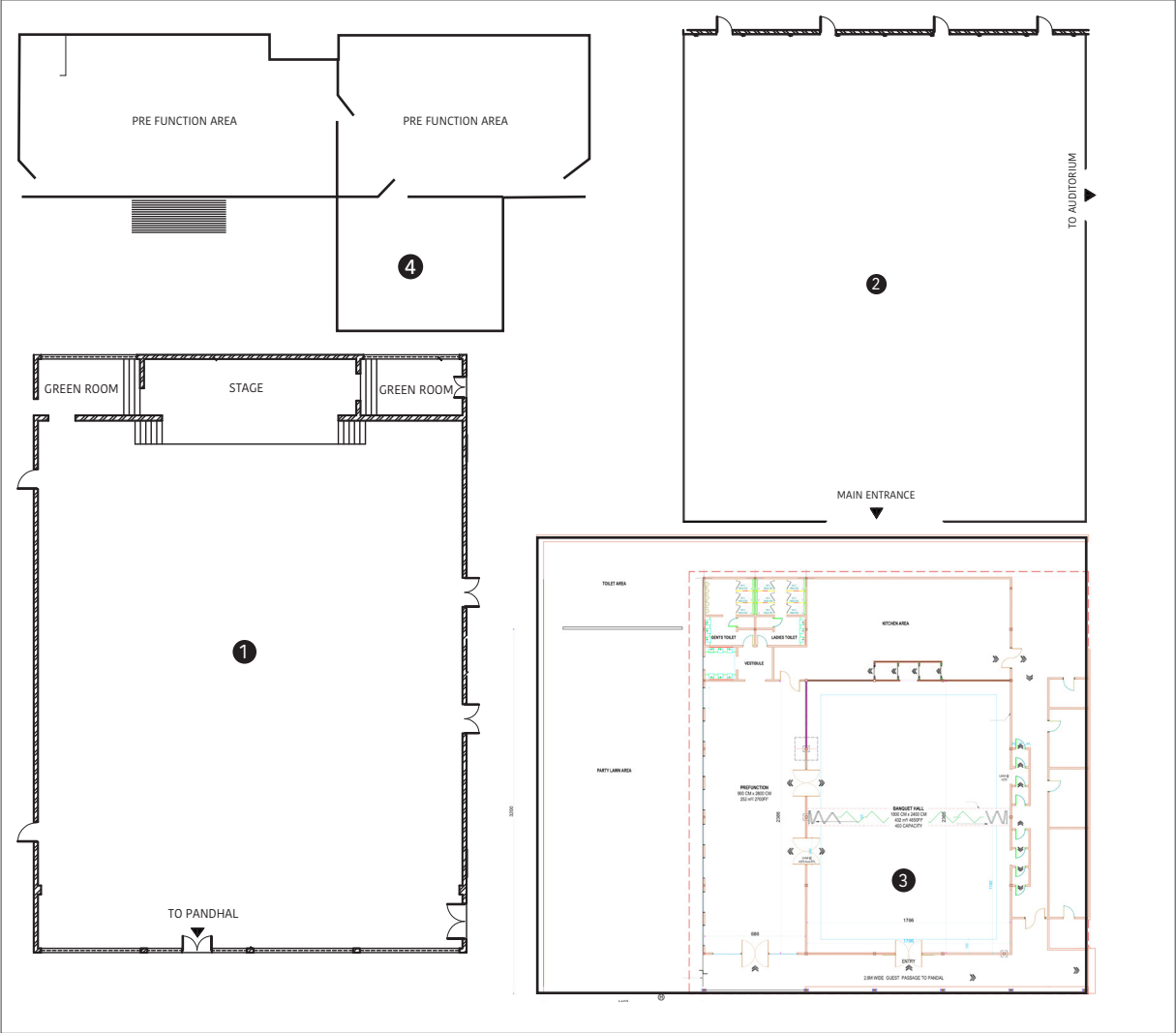


Ayurveda and Wellness Spa



The Ballroom

BANQUET AND MEETING ROOM FLOOR PLAN



VENUE	AREA SQ.FT.	DIMENSIONS L x W x H	THEATRE STYLE	CLASS ROOM	U SHAPE	BOARD ROOM	ROUND TABLE	CLUSTER STYLE	RECEPTION	SADYA
A/C Hall										
Raviz Convention Centre	739	96 x 77 x 22	750	400	100	400	280	750		
Maya	920	49 x 19 x 10	60	36	24	40	48	40	80	
Ananthapuri	4583.6	78.22 X 58.6 X 13	450	180	125	125	192	144	600	220
Boardroom / Meeting Room										
Roshni	540	21 x 21 x 10				20				
Tara	370	25 x 15 x 10				14				
The Hub	1195	53 x 22 x 8						50		
Semi Open / Non A/C Hall										
Pandhal	920	90 x 74 x 22	400	200	100	100	200	180	400	180
Outdoor Venue										
Chess Park	6640	96 x 61	400				200		400	
Beach	16000	200 x 800	900				400	400	900	



**Transportation :** International Airport, 15 kms | Domestic Airport, 15 kms  
Trivandrum City Centre, 13 kms



**THE LEELA**

KOVALAM

A RAVIZ HOTEL

**The Leela Kovalam, A Raviz Hotel :** Thiruvananthapuram 695 527 Kerala, India | Tel: +91 471 669 1111  
Email: [reservations@theleela.com](mailto:reservations@theleela.com) | [www.theleela.com](http://www.theleela.com)

Bengaluru, Chennai, Jaipur, New Delhi, Udaipur, Bhartiya City Bengaluru, Delhi, Gandhinagar, Gurugram, Mumbai, Kovalam, Ashtamudi and Hyderabad.