

# BENGALURU



**THE LEELA PALACE**

BENGALURU

### *Places of interest*

Bannerghatta national park  
Nandi hills  
Bengaluru Palace  
Srirangapatnam  
Bull temple  
St. Mary's Basilica

*Drawing inspiration from the architectural style of the Royal Palace of Mysore, The Leela Palace Bengaluru stands majestically amidst seven acres of lush gardens and a sparkling lagoon in the garden city of Bengaluru.*

### *Climate*

In summer, the min is 27°C and the max is 33°C  
In winter, the min is 15°C and the max is 24°C

### *General information*

Languages: English, Hindi, Kannada, Tamil  
Currency: Indian Rupee  
All major credit cards

*HAL AIRPORT ROAD*

# BENGALURU

The Leela Palace Bengaluru has 357 luxurious guestrooms, multiple dining options and extensive banqueting and conferencing venues.

World-class shopping comes to you in the form of The Leela Galleria. A luxuriously designed spa and a state-of-the-art fitness centre make the hotel an ideal place to stay for the business traveler.

*[www.theleela.com](http://www.theleela.com)*



The Leela Palace Bengaluru

*Welcome to a place where the age old Indian tradition of “Atithi Devo Bhava”, meaning “Guest is God”, is a way of life. At The Leela, everyone is committed to taking guest service to reverential heights. “Welcome to a world of grandeur & luxury”*

### ***Accommodation***

- Total no. of suites and rooms - 357
- 215 Deluxe rooms
- 20 Conservatory rooms
- 49 Royal Premier rooms
- 44 Royal Club rooms
- 8 Executive suites
- 5 Royal Club suites
- 5 Tower suites
- 8 Turret suites
- 2 Royal suites
- 1 Maharaja suite

### ***Guestroom Amenities***

- Sony High Definition LCD television with a DVD player
- Dual Line internet protocol phone
- Broadband wireless high speed internet
- Data port jacks
- Electronic safe
- Ergonomic mattress
- A Gourmet corner with fine selection of spirits, soft beverages and snacks
- Tea and coffee maker
- Luxurious bathroom with phone lines
- Power supply: 110/220 volts

### ***Guestroom services***

- In-room dining
- Laundry and dry cleaning
- Concierge services
- Wake-up call service
- Doctor on a call

### ***The Royal Club***

- Welcome drink on arrival
- Express check-in/check-out
- Exclusive Club lounge
- Complimentary food & beverage presentations at the lounge
- Boardroom and meeting rooms with comprehensive facilities
- Cigar Lounge
- Billiards room
- Round the clock butler service

### ***Dining***

- Jamavar - Signature Indian restaurant
- Le Cirque Signature: An exclusive experience serving signature French and Italian dishes from the flagship Le Cirque New York

- Zen - Pan-asian cuisine
- Citrus - All day dining
- Library bar - International martinis and cigar lounge

### ***Conference & Banquet***

#### ***Facilities***

- Grand Ballroom with a pre-function area
- Royal Ballroom with a pre-function area
- 12 boardroom and meeting rooms

### ***Spa and Fitness***

- Asia's premier urban spa
- Outdoor swimming pool

### ***Special Features***

- A beauty salon
- A shopping arcade
- Live instrumental music at The Lobby
- Florist on request
- Sightseeing tours
- Currency exchange





Le Cirque Signature

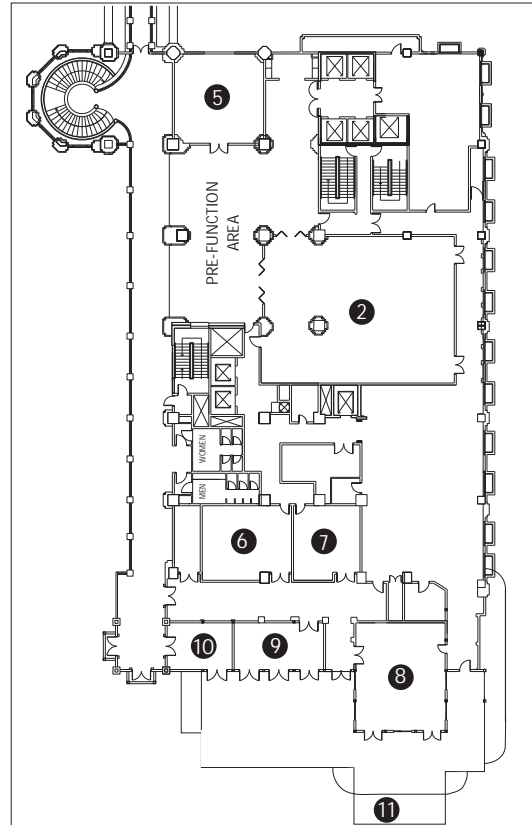
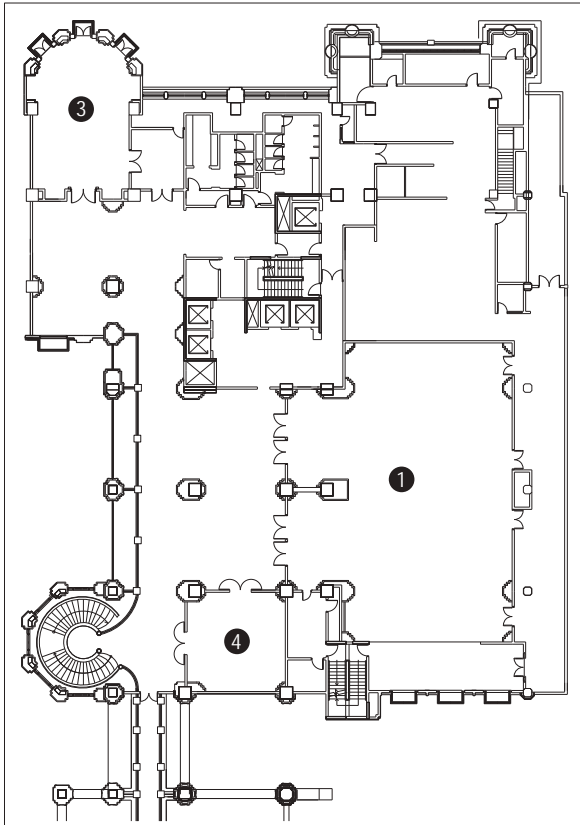


Spa-Relaxation room



Deluxe Room

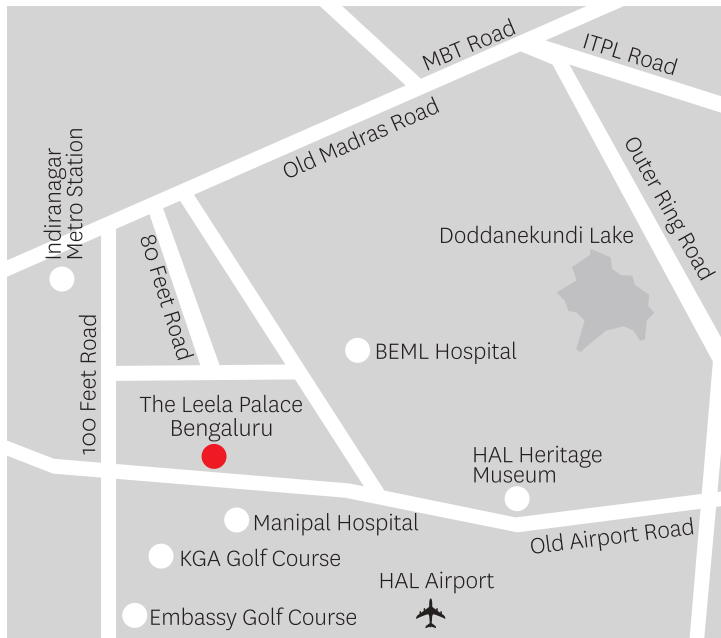
## BANQUET & MEETING ROOM FLOOR PLAN



- 1** GRAND BALLROOM   **2** ROYAL BALLROOM   **3** TURRET BOARDROOM   **4** SITARA   **5** KAMAL  
**6** NIDHI   **7** YATRA   **8** DIYA   **9** SURYA   **10** MAYA   **11** EXTENDED TERRACE

VENUE	AREA SQ. FT.	DIMENSIONS L x W x H	SIT DOWN BUFFET	THEATRE STYLE	CLASS ROOM	BOARD ROOM	CLUSTER ROOM	RECEPTION
Grand Ballroom	4400	100 x 44 x 15	240	600	240	80	200	900-1000
Grand Ballroom - PFA	2429	53 x 15 x 10						
Turret Boardroom	768	24 x 32 x 10						
Royal Boardroom	2700	60 x 45 x 13	120	200	90	40	96	250-300
Royal Boardroom - PFA	1568	56 x 58 x 11						
Kamal	784	28 x 28 x 10	40	60	27	20	30	50
Sitara	756	28 x 27 x 10	40	60	27	20	30	50
Nidhi	644	28 x 23 x 10	30	45	24	20	30	
Yatra	460	20 x 23 x 10	20	30	18	15	20	
Diya	891	33 x 27 x 9	40	80	36	23	40	
Diya Terrace	1652	35 x 28						110
Surya	392	28 x 14 x 8	15	20	9	15	10	
Surya Terrace	1520	40 x 38						
Maya	280	20 x 14 x 8	10	15	9	9	10	
Roshni	406	29 x 14 x 8				12		
Dhwani	377	29 x 13 x 8				12		
Nithya	840	30 x 28 x 8	35	70	20	20	24	
Royal Club Boardroom	700	28 x 25 x 14				20		

PFA = Pre - Function Area



**TRANSPORTATION**

International Airport, 45 km  
 Domestic Airport, 45 km

The Leela Palace Bengaluru  
 23, HAL Airport Road,  
 Bengaluru 560 008 India

tel: + 91 80 2521 1234  
 fax: + 91 80 2521 2222

e mail:reservations@theleela.com

**RESERVATIONS & INFORMATION**

THE LEELA PALACES, HOTELS AND RESORTS

GDS CHAIN CODE: LR

THE LEELA RESERVATIONS  
 WORLDWIDE TOLL FREE

INDIA	1-800-1031-444
USA	855 670 3444
UK	08000 261 111
HONG KONG	800 906 444
SINGAPORE	1800 223 4444
PRIVATE LINES	+ 91 124 4425 444

www.theleela.com

**PREFERRED HOTELS AND RESORTS**

TOLL FREE  
 CANADA/USA 1 800 323 7500

Austria, Denmark, France,  
 Germany, Italy, The Netherlands,  
 Spain, Sweden,  
 Switzerland and UK 00800 32375001

Australia	1 800 134 271
Hong Kong, SAR	800 96 3365
Japan	0120 984 450
Singapore	1 800 227 3126
Taiwan	00801 65 1254

PHG WORLDWIDE TOLL  
 NUMBER 1 817 567 9633

www.preferredhotels.com



**THE LEELA PALACE**

BENGALURU

The Leela Palaces, Hotels and Resorts: New Delhi, Bengaluru, Chennai, Mumbai, Gurugram, Udaipur, Goa and Kovalam.  
 Upcoming Hotels: Jaipur; Agra; Lake Ashtamudi (Kerala); Bhartiya City (Bengaluru).

Jan - 2017